



**NEXEN NEXEN CORPORATION**

5F NEXEN Gangnam Tower, 226, Bangbae-ro, Seocho-gu, Seoul, KOREA 06584  
T. +82 2 6420 0651~0653 F. +82 2 6009 9094 solidtire@nexentire.com  
www.nexensolidtire.com

IT'S PERFECT

# SOLIDPRO 700

**Ultimate Performance  
for harsh working environment**



Optimal tire solution for material handling equipment

# SOLIDPRO 700

## PREMIUM SOLID TIRE

### Over 30 years of Experienced Technology

- 1987 Started solid tire production in Korea
- 1997 Developed non-marking type and commercialized it
- 1999 Took over Nexen Tire Corporation
- 2012 Launched SOLIDPRO of new conceptual multi-pattern(MTP)
- 2018 Launched premium tire SOLIDPRO 700

OVER  
**30**  
YEARS

### Verified Original Equipment tire with Global Standard

- Global Standard** Conforming to ETRTO and JATMA
- 3 LAYERS** Providing superior shock absorption and ride comfort by adoption of 3-layer structure
- Eco Friendly Tire** European REACH compliance, use of environmentally friendly materials



## Improved Groove & Profile

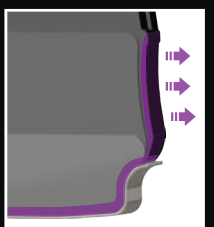
### Upgrade both in function and design

- Deep groove** Enhanced groove depth & J-Line
- Design optimized shoulder** Good endurance against heavy load even with groove expansion
- Wear Indicator** Three-stage indicator for available life span(30%-50%-80%)
- Stylish design** Adopting dynamic Knurling Design



### Smart design for tire body

- Volume up** Improved durability through volume up at side part
- Volume up in Bottom part** Preventing tire deformation & stable performance against heavy load
- Enhanced Pressure uniformity** Strengthening safety through strong bonding with rim







# SOLIDPRO 700

## SPECIFICATIONS

SIZE	RIM	Easy Fit	O.D (mm)	W.D (mm)	Load Capacity (kg)				Weight (kg)		
					Load	Steer	~6km/h	~10km/h		~25km/h	Static
<b>8"</b>											
4.00-8	3.00D	O	409	115	950	730	950	860	730	1100	11.3
4.00-8	3.75I	-	409	115	950	730	950	860	730	1100	11.6
5.00-8	3.00D	O	456	124	1415	1090	1415	1285	1090	1645	15.7
5.00-8	3.75I	-	456	124	1415	1090	1415	1285	1090	1645	16.2
15X4½-8 (125/75-8)	3.00D	O	378	113	1040	800	1040	945	800	1210	9.0
16X6-8 (150/75-8)	4.33R	O	419	141	1495	1150	1495	1360	1150	1740	14.9
18X7-8 (180/70-8)	4.33R	O	454	163	2145	1650	2145	1945	1650	2490	20.6
18X9-8	7.00E	O	464	209	2300	1900	2300	2090	1900	2945	29.0
<b>9"</b>											
15X5½-9 (140/55-9)	4.00E	O	380	130	1170	900	1170	1060	900	1360	9.7
6.00-9	4.00E	O	530	141	1885	1450	1885	1710	1450	2190	25.6
21X8-9 (200/75-9)	6.00E	O	522	185	2755	2120	2755	2500	2120	3200	32.4
<b>10"</b>											
200/50-10	6.50F	O	458	196	2470	1900	2470	2240	1900	2870	23.3
6.50-10	5.00F	O	580	171	2340	1800	2340	2125	1800	2720	35.3
6.50-10	5.50F	-	580	171	2340	1800	2340	2125	1800	2720	35.7
23X9-10 (225/75-10)	6.50F	O	585	205	3445	2650	3445	3125	2650	4000	46.0
<b>12"</b>											
23X10-12 (250/60-12)	8.00G	O	586	240	3770	2900	3770	3420	2900	4380	48.0
27X10-12 (250/75-12)	8.00G	O	682	241	3900	3000	3900	3540	3000	4530	72.0
7.00-12	5.00S	O	660	173	2920	2240	2920	2645	2240	3380	46.5
<b>15"</b>											
8.15-15 (28X9-15, 225/75-15)	7.00	O	698	215	3445	2650	3445	3125	2650	4380	57.2
28X12.5-15 (355/45-15)	9.75	O	695	299	5525	4250	5525	5015	4250	6420	81.0
250-15 (250/70-15)	7.00	O	722	225	4745	3650	4745	4310	3650	5510	65.8
250-15 (250/70-15)	7.50	O	722	225	4745	3650	4745	4310	3650	5510	67.6
300-15 (315/70-15)	8.00	O	820	259	5850	4500	5850	5310	4500	6795	107.6
6.00-15	4.50E	-	700	157	2455	1820	2455	2095	1820	3165	43.5
7.00-15	5.50	O	740	175	3545	2725	3545	3215	2725	4115	55.4
7.00-15	6.00	O	740	175	3545	2725	3545	3215	2725	4115	55.9
7.50-15	5.50	-	760	197	3900	3000	3900	3540	3000	4530	65.6
7.50-15	6.00	-	760	197	3900	3000	3900	3540	3000	4530	66.4
7.50-15	6.50	O	760	197	3900	3000	3900	3540	3000	4530	67.0
8.25-15	6.50	O	814	215	4750	3650	4750	4300	3650	5510	87.3
400/60-15	11.00	O	817	329	8970	6900	8970	8140	6900	10350	134.4
<b>16"</b>											
7.50-16	5.50	-	782	197	3950	3050	3950	3600	3050	4605	69.5
7.50-16	6.00GS	O	782	197	3950	3050	3950	3600	3050	4605	69.9
<b>20"</b>											
9.00-20	7.00	-	1000	229	5400	4500	5400	4905	4500	6795	133.5
10.00-20	7.00	-	1033	261	6000	5000	6000	5450	5000	7550	162.7
10.00-20	7.50	-	1033	261	6000	5000	6000	5450	5000	7550	163.6
10.00-20	8.00	-	1033	261	6000	5000	6000	5450	5000	7550	164.9
11.00-20	7.50	-	1075	273	6540	5450	6540	5940	5450	8230	190.4
11.00-20	8.00	-	1075	273	6540	5450	6540	5940	5450	8230	191.8
12.00-20	8.50	-	1100	293	7560	6300	7560	6865	6300	9440	217.0
<b>24"</b>											
14.00-24	10.00	-	1320	341	11100	9250	11100	10085	9250	13855	367.9

## Engineered to have a stronger Tread

### Enhanced performance, longer life time

**New pattern NP01** Well-balanced performance and stylish curves

**Longer life time** Increasing ground contact area

**Improved Rolling Resistance** Power loss prevention

**Enlarged block size** Block deformation and abnormal wearout

**Excellent load distribution** Ensured stability specific to transportation of heavy load



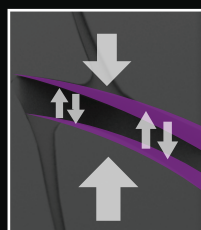
### Good resistance to vibration and impact

**Main Groove Angle** Groove angle to minimize edge impact

**Design dispersing ground contact area** Reducing vibration and noise

**Improved block hardness property** Twisting prevention and chunking phenomenon improvement

**Chip&Cut** Improved Chip&Cut by architect to minimize being crushed



\* Load capacity is based on Counter Balanced forklift Truck and guaranteed upto 25km/h.

\* In case of installation to other equipment, please consult manufacturer compatibility.

